



KHABAROVSK REGION

INVESTMENT
POTENTIAL



s. Berill
2934 m

REGION

8 533 km



Time zone
MSC +7



787,6 thousand square km
Khabarovsk Region Area



Population 1.3 million
The population density is 1.7 people / sq. km



31 ethnos
For the 8 peoples- Nanai, Negidals, Nivkh people, Oprochs, Udege, Ulchs, Evens, Evenks – krai is a historical homeland

107

Partner countries
of the Khabarovsk region



12 airports

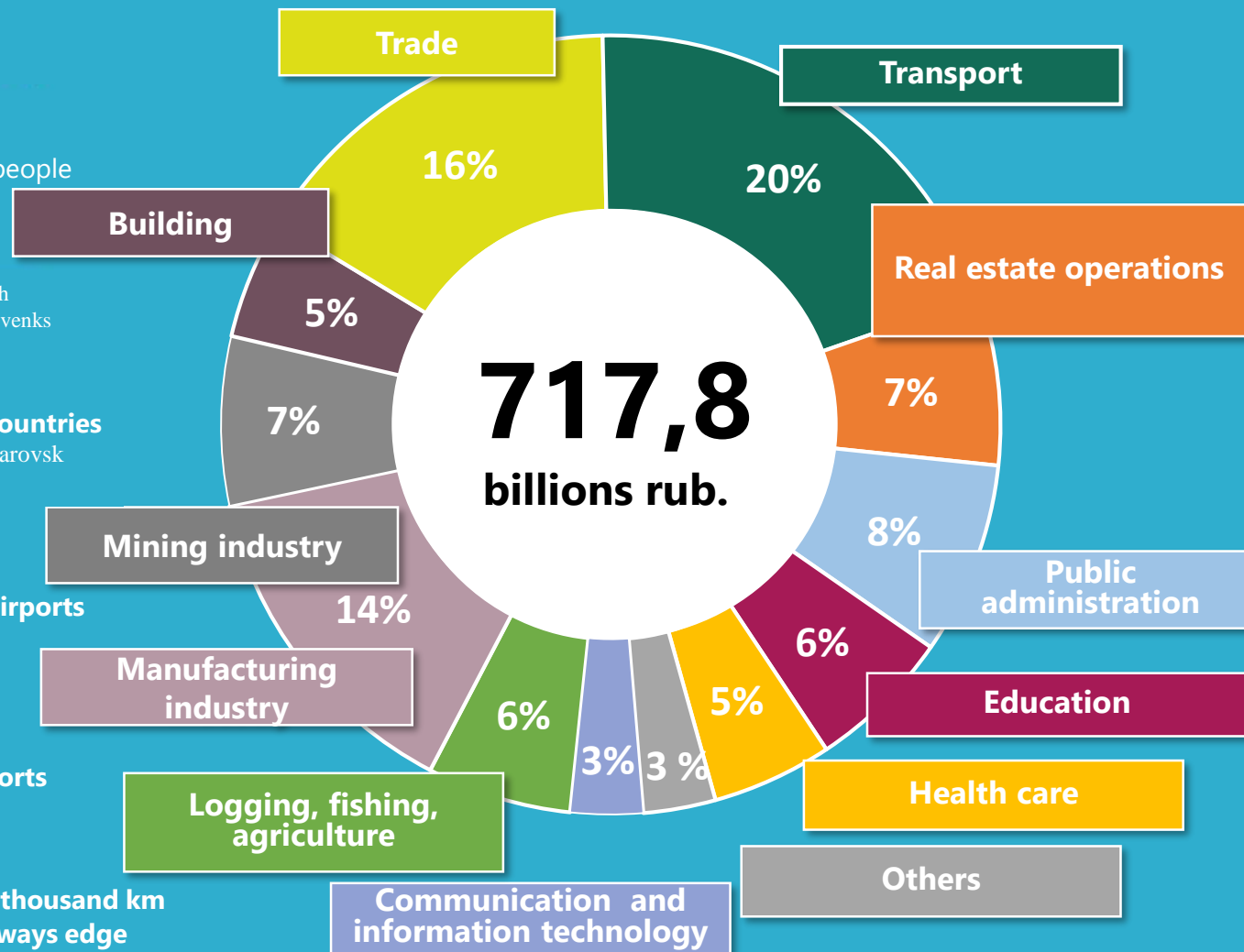


5 seaports



10,7 thousand km
highways edge

ECONOMIC STRUCTURE 2018



ECONOMIC CENTERS OF GROWTH

8,6 %
total area

81 %
of the population

80 %
of the turnover of
organizations

VERKHNEBUREINSKY GROWTH CENTER

Industrial Center for the extraction
and processing of natural resources

₽ 25,6
billion
rubles

28,5
billion
rubles

KHABAROVSK AGGLOMERATION

Center for transport and
commercial logistics

₽ 759,9
billion
rubles

396,9
billion
rubles

NIKOLAEVSKI GROWTH CENTER

Fish Processing and Mining Center

₽ 36,4
billion
rubles

46,6
billion
rubles

AGGLOMERATION "KOMSOMOLSK - AMURSK – SOLNECHNY"

Industrial and engineering center

₽ 275,6
billion
rubles

159,4
billion
rubles

VANINO-SOVETSKO- GAVANSKY CENTER

Bulk Export Processing Center

₽ 125,4
billion
rubles

208,4
billion
rubles



₽ of the turnover of organizations – в 2025 г.

investments – за 2018 – 2025

TECHNONICOL FAR EAST, Co. Ltd

SPECIALIZATION:
production of heat and sound insulating
materials, plastic products

INVESTMENTS:
2,6 billion rubles

WORKPLACES:
200 units



RFP GROUP, Co. Ltd

SPECIALIZATION:
deep wood processing

INVESTMENTS:
14,0 billion rubles

WORKPLACES:
800 units



Industrial park «AVANGARD», Co. Ltd

SPECIALIZATION:
creation of infrastructure of a private
industrial park

INVESTMENTS:
1,0 billion rubles

WORKPLACES:
260 units



JSC «VANINOTRANSUGOL»

SPECIALIZATION:
stevedoring activities

INVESTMENTS:
3,3 billion rubles

WORKPLACES:
450 units



PROTON RADIATION THERAPY CENTER

An aerial photograph of a large medical facility, likely a cancer center. The complex consists of several large, white, multi-story buildings with dark green roofs, interconnected by walkways and surrounded by green lawns. A parking lot with several cars is visible in the foreground. The facility is situated in a suburban area with trees and other buildings in the background.

Proton Therapy Center

Department of
Radioisotope
Therapy

High-dose chemotherapy center with
bone marrow transplant technology

WOODWORKING PRODUCTION IN AMURSK



INVESTMENT AREA "CAPE OF VESELY"



Vanina bay

CAPE OF VESELY

Tatar strait

Chum bay

North bay

Sovetsko-Gavansky district
ws. Zavety Ilyicha

- Land plots up to 300 ha in the coastal zone
- Depths up to 18 m
- Access to roads, free electric power
- Free Port Vladivostok



**KHABAROVSK KRAY
INVESTMENT
AND DEVELOPMENT
AGENCY**


KHABAROVSK KRAI INVESTMENT AND DEVELOPMENT AGENCY


Attraction of investments, support of investment projects based on "one window" principle, promotion of the investment potential in Russia and abroad.

DIRECTOR

SHATOKHIN ALEXANDER PAVLOVICH



 Khabarovsk, st. Turgenev 26a, of. 210

 8 (800) 770 08 27

 agency@invest-khv.ru

 www.khabkrai-invest.com



**MINISTRY OF INVESTMENT DEVELOPMENT
AND ENTREPRENEURSHIP OF KHABAROVSK
KRAI**


- Formation and implementation of regional state policy aimed at attracting private investment and developing small and medium enterprises;
- Creating conditions for attracting private investment;
- Promoting competition in the region, improving business and investment climate, creating conditions for business development.



MINISTER

KOSTINA MARINA IVANOVNA

 Khabarovsk, st. Frunze, 72, of. 302

 (4212) 34-04-55

 mide@adm.khv.ru

 <https://mide.khabkrai.ru>



THANKS
FOR
ATTENTION!